

Note: This is Online Appendix 1 of Valerio Sibanda, LP, Van Zyl A, Esterhuizen TM, et al. Two-year overall survival of children with cancer between 2015 and 2021 in Zimbabwe. S. Afr. j. oncol. 2025; 9(0), a341. <https://doi.org/10.4102/sajo.v9i0.341>

Online Appendix 1

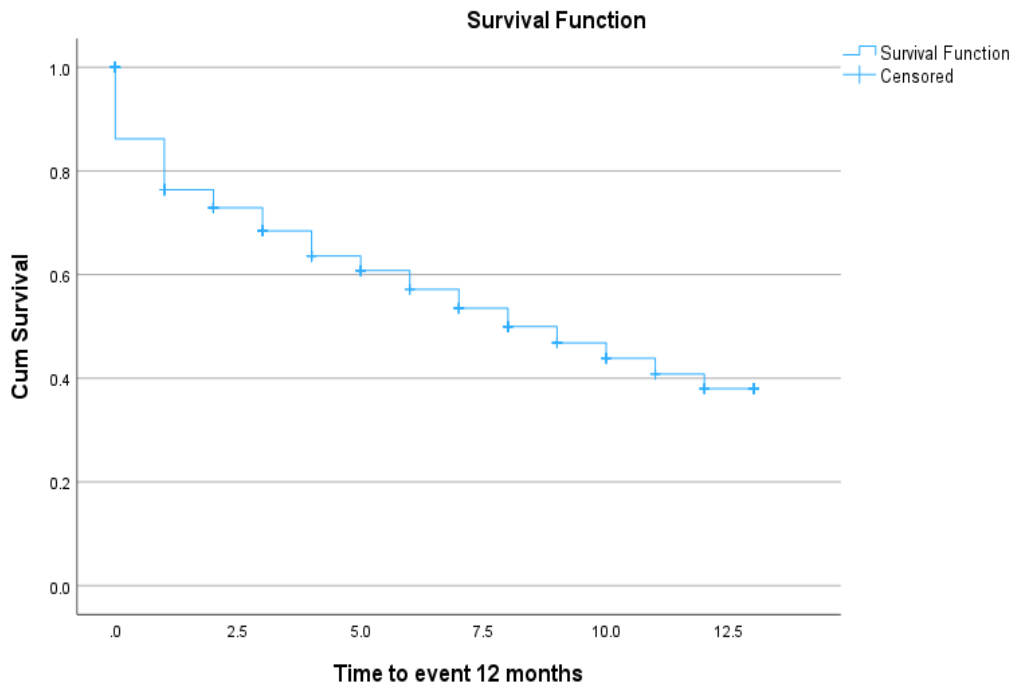


FIGURE 1-A1: Kaplan Meier overall survival at one year.

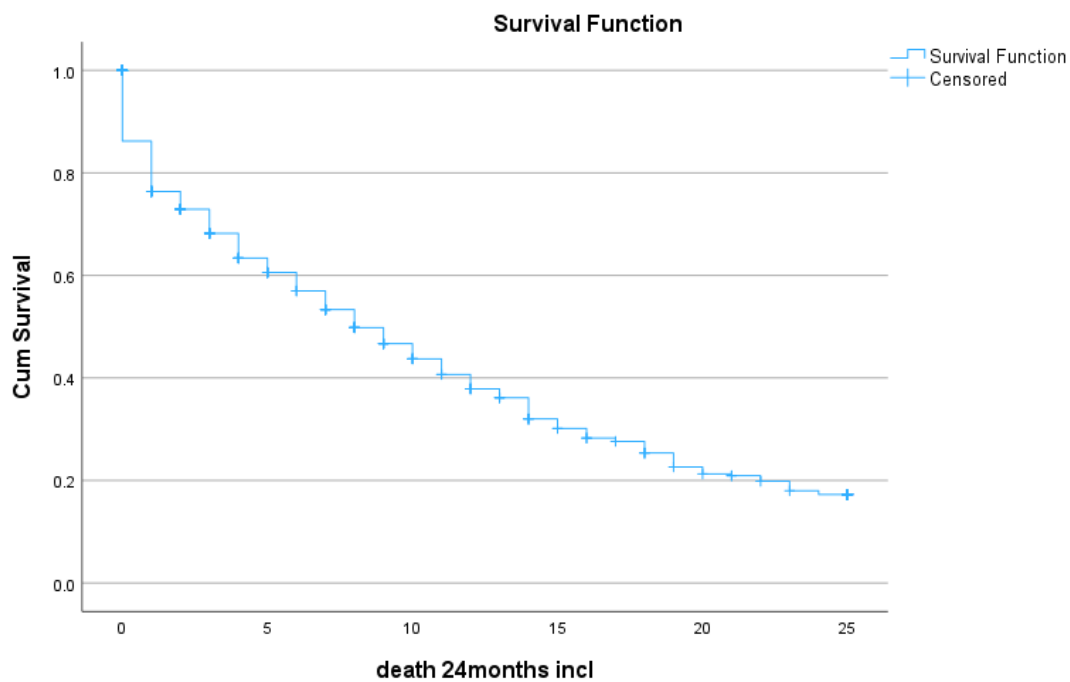


FIGURE 2-A1: Kaplan Meier overall survival at two years.

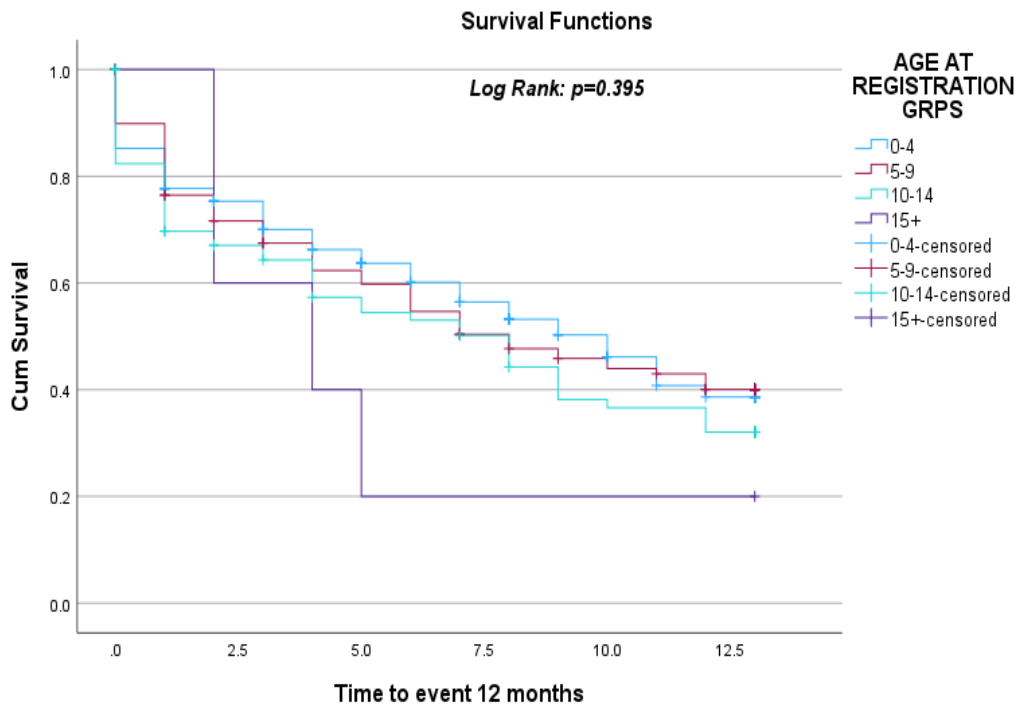


FIGURE 3-A1: Kaplan Meier survival according to age at one year.

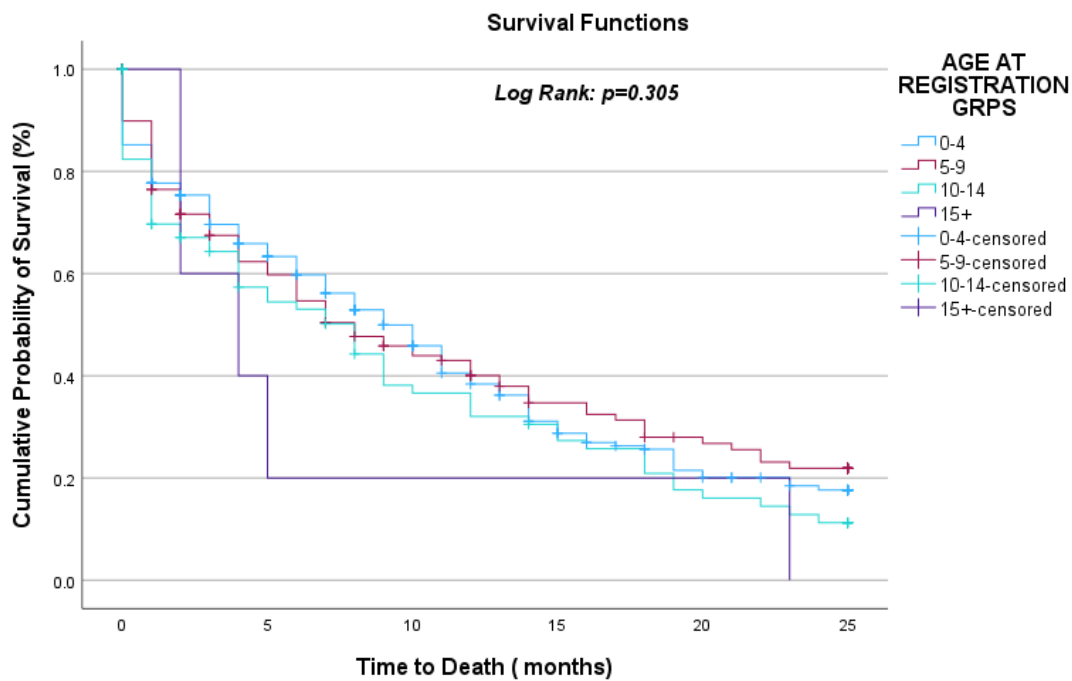


FIGURE 4-A1: Kaplan Meier survival according to age at two years.

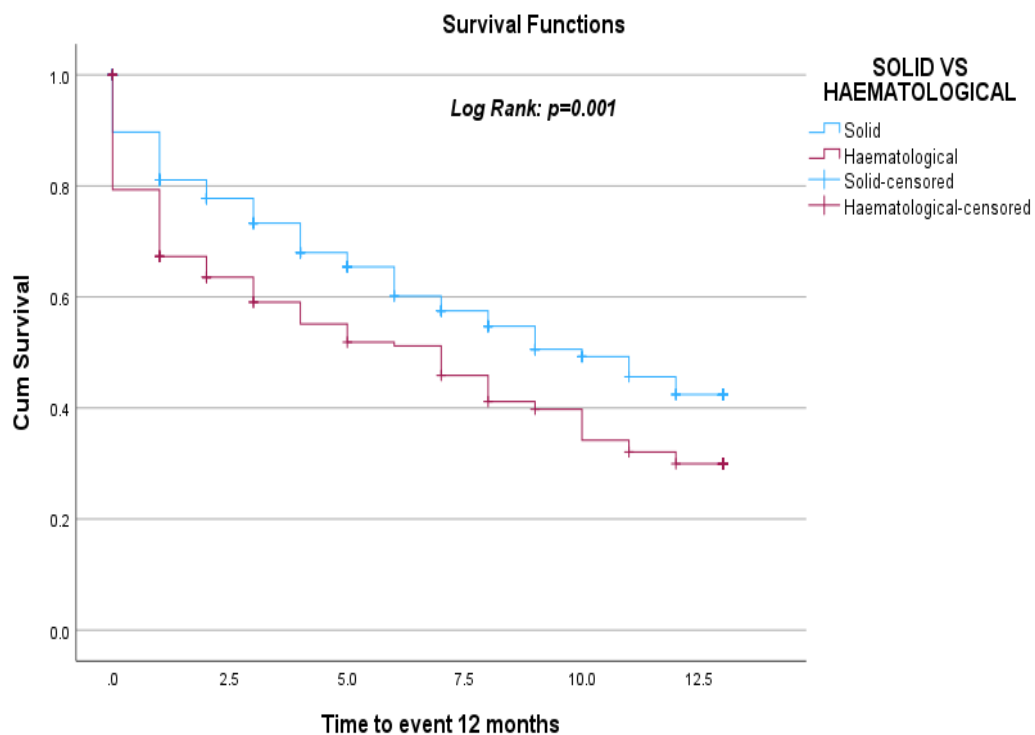


FIGURE 5-A1: Kaplan Meier survival by according to solid vs haematological tumours at one year.

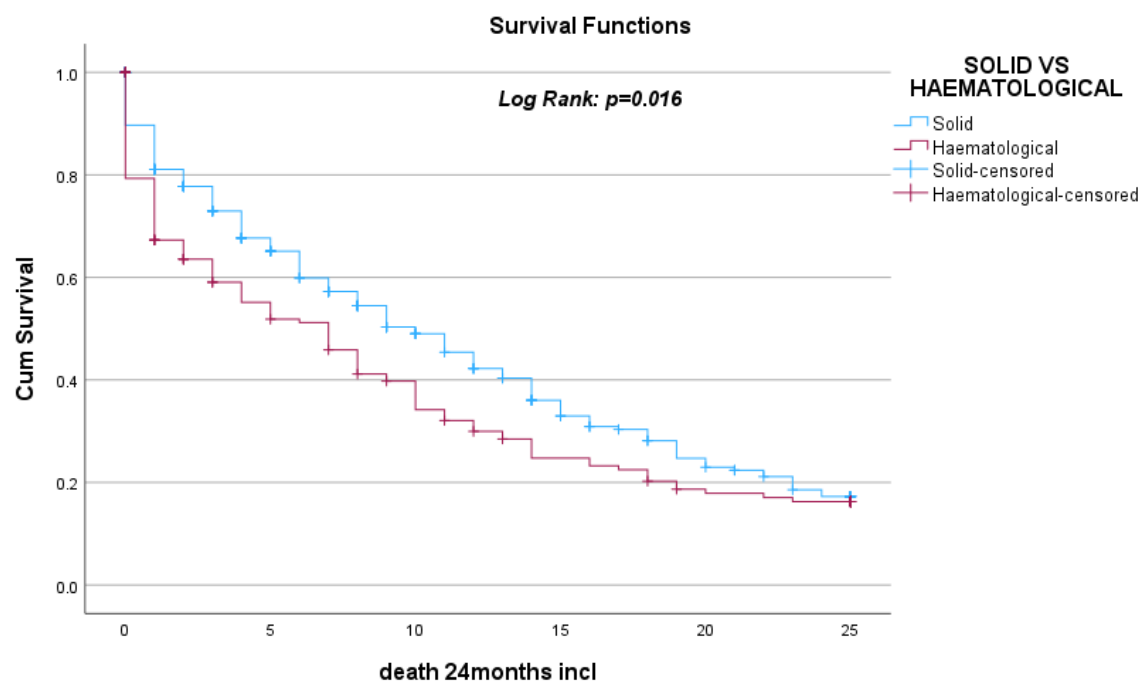


FIGURE 6-A1: Kaplan Meier survival according to solid vs haematological tumours at two years.

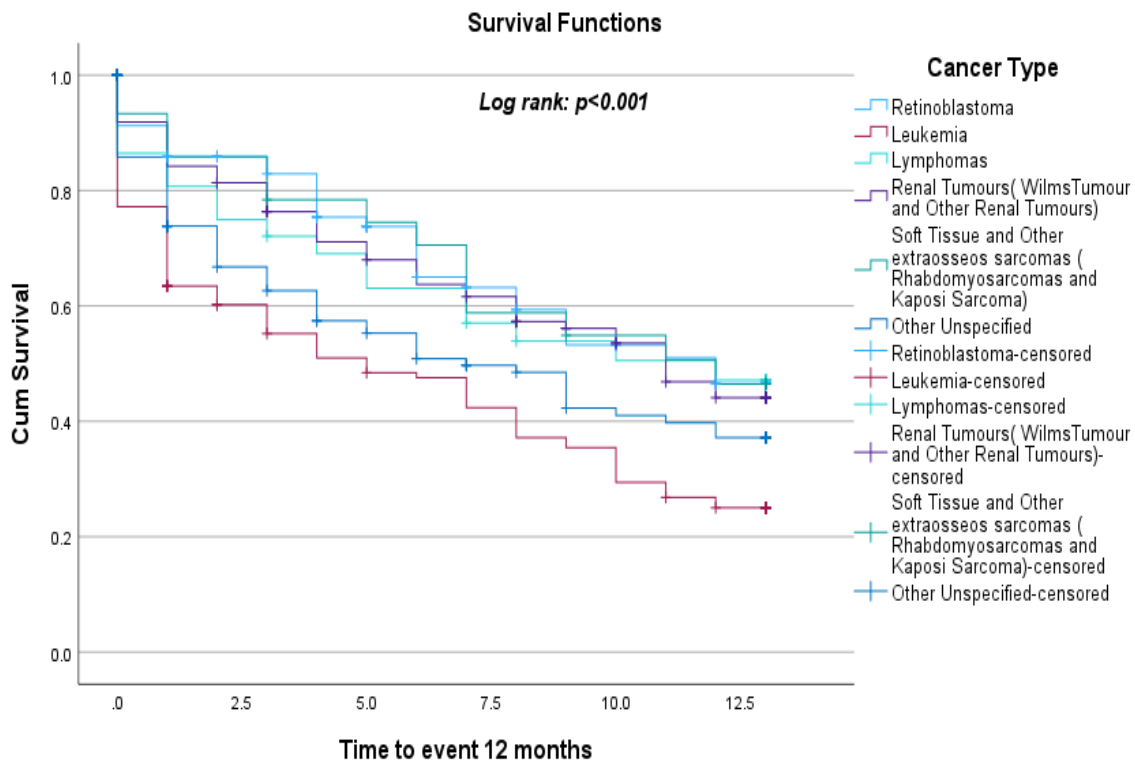


FIGURE 7-A1: Kaplan Meier survival according to cancer type at one year.

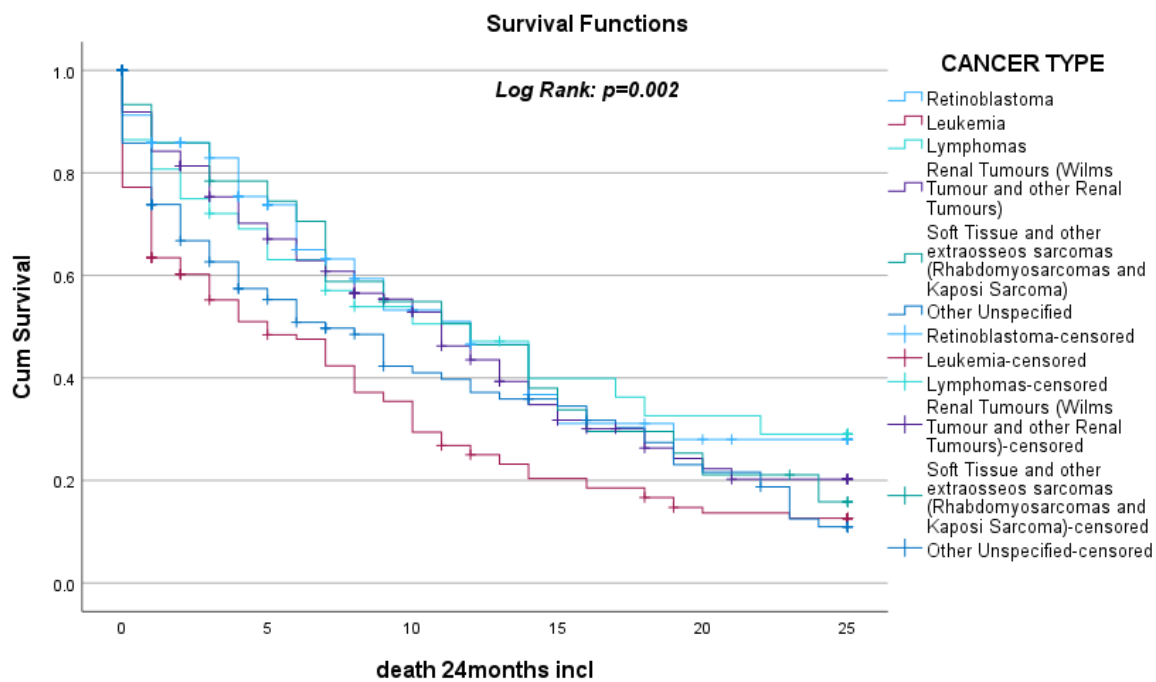


FIGURE 8-A1: Kaplan Meier survival according to cancer type at two years.

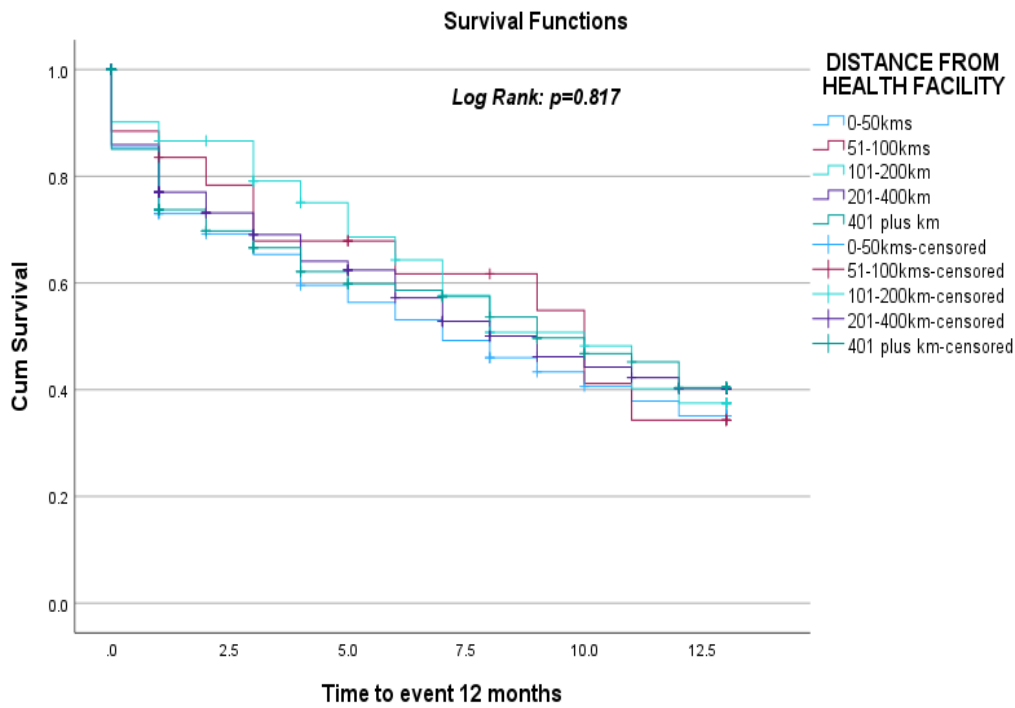


FIGURE 9-A1: Kaplan Meier survival according to distance from treatment facility at one year.

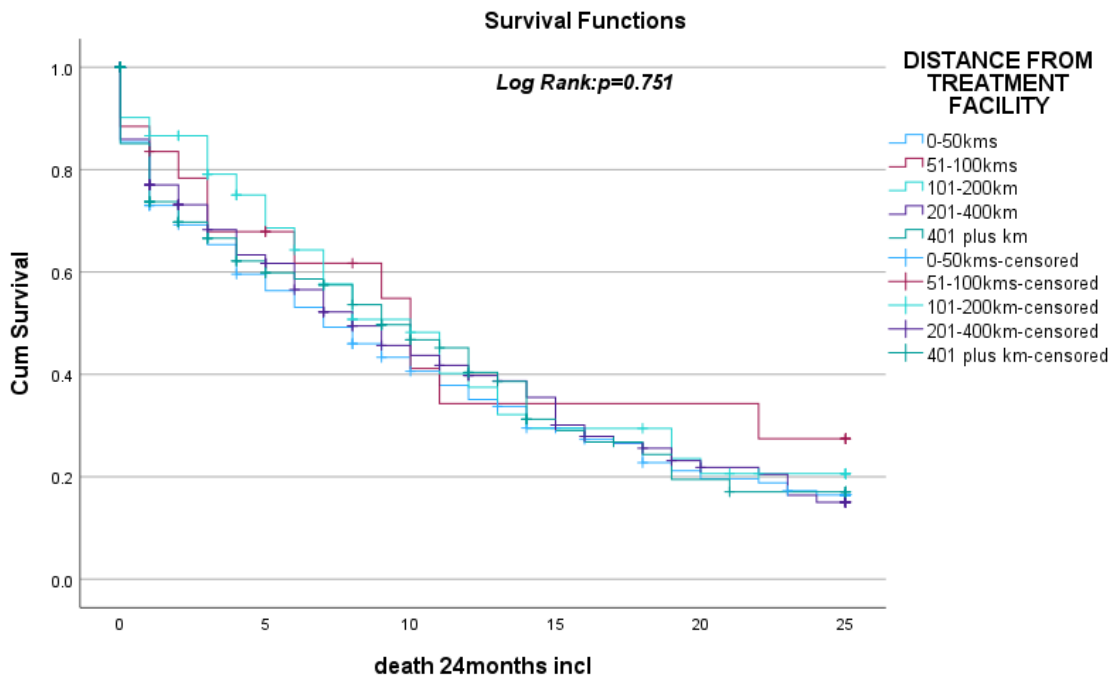


FIGURE 10-A1: Kaplan Meier survival according to distance from treatment facility at two years.

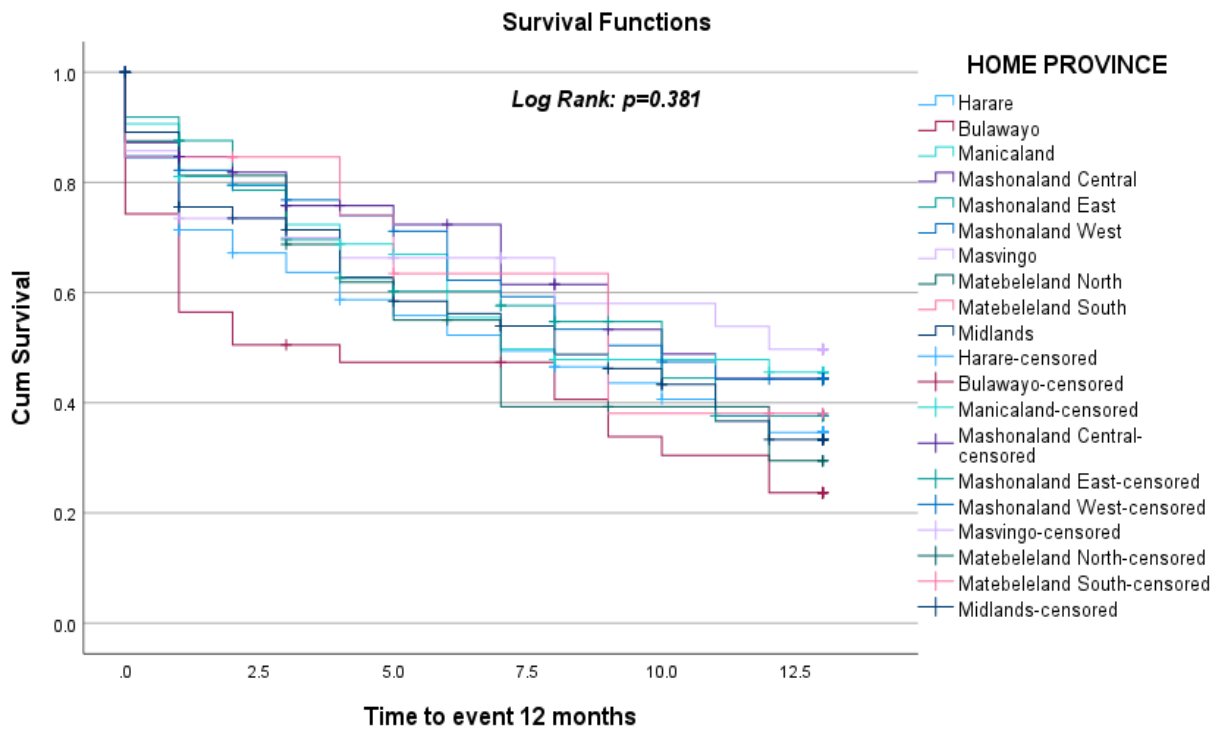


FIGURE 11-A1: Kaplan Meier survival according to home province at one year.

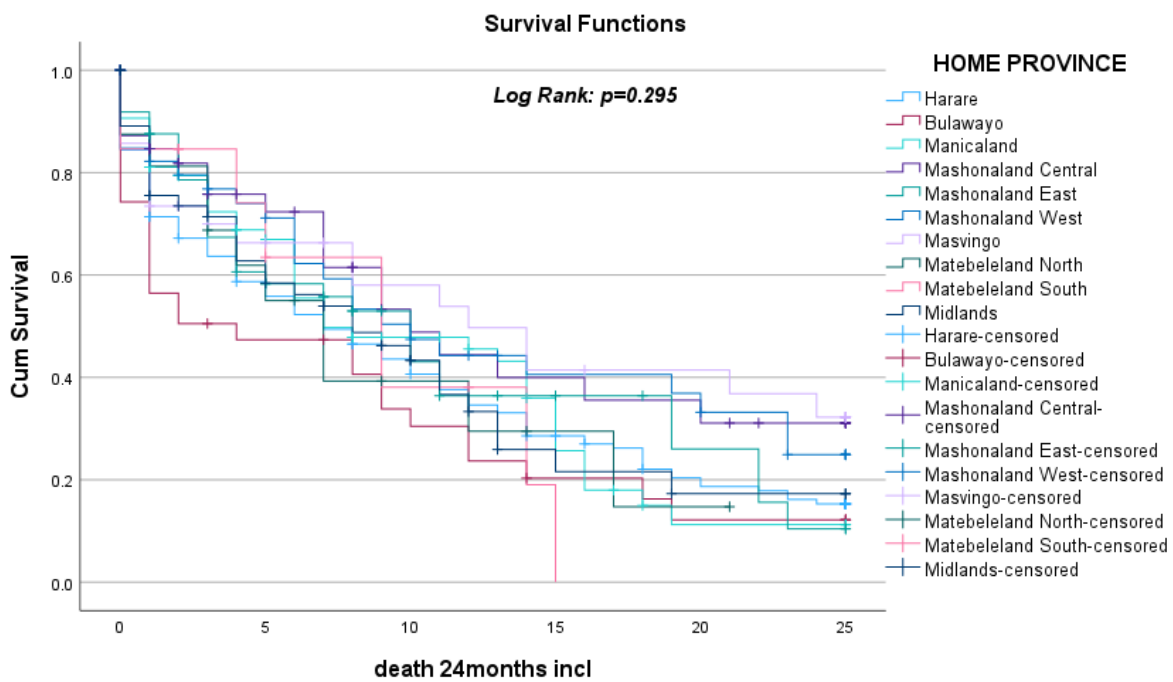


FIGURE 12-A1: Kaplan Meier survival according to home province at two years.

TABLE 1-A1: Kaplan Meier means and medians for survival time (months) by Cancer Group at 1 year ($p = 0.001$).

Cancer group	Mean†				Median				1 year OS (%)
	Estimates	Std. Error	95% Confidence Interval		Estimates	Std. Error	95% Confidence Interval		
			Lower Bound	Upper Bound			Lower Bound	Upper Bound	
Solid	8.16	0.29	7.58	8.73	10.0	1.00	8.04	11.9	42.4
Haematological	6.50	0.41	5.69	7.32	7.00	1.13	4.79	9.21	30
Overall	7.58	0.24	7.11	8.51	8.00	0.72	6.60	9.40	-

Note: SPSS v28 used to generate table.

†, Estimation is limited to the largest survival time if it is censored.

Table 2-A1: Kaplan Meier means and medians for survival time by cancer group at 2 years ($p = 0.016$).

Cancer group	Mean†				Median				2-year OS (%)
	Estimates	Std. Error	95% Confidence Interval		Estimates	Std. Error	95% Confidence Interval		
			Lower Bound	Upper Bound			Lower Bound	Upper Bound	
Solid	11.4	0.54	10.3	12.5	10.00	1.00	8.03	11.9	17.3
Haematological	8.98	0.72	7.57	10.4	7.00	1.13	4.79	9.21	16.3
Overall	10.6	0.44	9.71	11.4	8.00	0.72	6.59	9.41	-

Note: SPSS v28 used to generate table.

†, Estimation is limited to the largest survival time if it is censored.

TABLE 3-A1: Characteristics of those who died in the first month, first year and second year.

Variable	Groups	Month 1 (N = 118)		Year 1 (N = 275)		Year 2 (N = 64)	
		Count	%	Count	%	Count	%
Sex	Male	58	49.6	145	52.7	41	64.1
	Female	59	50.4	129	46.9	23	35.9
	Unknown	1	0.8	1	0.4	-	-
Age groups	0-4	62	52.5	147	53.5	33	51.6
	5-9	31	26.3	73	26.5	16	25.0
	10-14	25	21.2	51	18.5	13	20.3
	15+			4	1.5	1	1.6
Performance status	Active	19	16.1	67	24.4	28	43.8
	Frail	73	61.9	169	61.5	34	53.1
	Bedridden	24	20.3	35	12.7	1	1.6
	Unknown	2	1.7	4	1.5	1	1.6
Cancer type	Retinoblastoma	11	9.3	33	12.0	7	10.9
	Leukemia	49	41.5	94	34.2	13	20.3
	Lymphoma	7	5.9	18	6.5	5	7.8
	Renal Tumours	17	14.4	53	19.3	14	21.9
	Soft Tissue Sarcomas	4	3.4	14	5.1	7	10.9
	Other Unspecified Cancers	30	25.4	63	22.9	18	28.1

TABLE 4-A1: Characteristics of those lost to follow-up in the first and second year.

Variable	Groups	Year 1 (N = 108)		Year 2 (N = 21)	
		Count	%	Count	%
Sex	Male	49	45.4	12	57.1
	Female	59	54.6	9	42.9
Age groups	0-4	67	62.6	16	76.2
	5-9	27	25.2	4	19.0
	10-14	13	12.1	1	4.8
Performance status	Active	52	48.1	10	47.6
	Frail	52	48.9	10	47.6
	Bedridden	4	3.7	1	4.8
Cancer type	Retinoblastoma	28	25.9	5	23.8
	Leukemia	15	13.9	2	9.5
	Lymphoma	5	4.6	1	4.8
	Renal Tumours	27	25.0	8	38.1
	Soft Tissue Sarcomas	5	4.6	1	4.8
	Other Unspecified Cancers	28	25.9	4	19.0

Table 5-A1: Patient Characteristics compared between included and excluded participants.

Variable	Included (N = 514)		Excluded (N = 576)		Total (N = 1090)		p-values
	Count	%	Count	%	Count	%	
Sex	-	-	-	-	-	-	0.474
Male	285	55.6	307	53.4	592	54.4	-
Female	228	44.4	268	46.6	496	45.6	-
Total	513 ^a	100	575 ^b	100	1088 ^c	100	-
Age at diagnosis	-	-	-	-	-	-	0.002
0-4	284	55.5	271	52.9	555	54.2	-
5-9	138	27.0	125	24.4	263	25.7	-
10-14	85	16.6	90	17.6	175	17.1	-
15+	5	1.0	26	5.1	31	3.0	-
Total	512 ^d	100	512 ^e	100	1024 ^f	100	-
Type of cancer	-	-	-	-	-	-	<0.001
Retinoblastoma	80	15.5	83	14.4	163	15.0	-
Leukemia	136	26.5	93	16.1	229	21.0	-
Lymphomas	37	7.2	56	9.7	93	8.5	-
Renal Tumors (Wilms Tumor)	111	21.6	130	22.6	241	22.1	-
Soft Tissue sarcomas	30	5.8	42	7.3	72	6.6	-
Other Unspecified Cancers	120	23.3	172	29.9	292	26.8	-
Total	514	100	576	100	1090	100	-
Performance status of child	-	-	-	-	-	-	0.159
Active	182	35.4	231	40.1	413	37.9	-
Frail	282	54.9	279	48.4	561	51.5	-
Bedridden	45	8.8	56	9.7	101	9.3	-
Missing	5	1.0	10	1.7	15	1.4	-
Total	514	100	576	100	1090	100	-
Solid vs Haematological	-	-	-	-	-	-	0.004
Solid	340	66.1	427	74.1	767	70.4	-
Haematological	174	33.9	149	25.9	323	29.6	-
Total	514	100	576	100	1090	100	-

^{a-c} Sex: There were two patients whose sex was not recorded at registration, leading to two missing values and a total of 1088.

^{d-f} Age at diagnosis: 66 patients had missing dates of birth, resulting in a total of 1024.